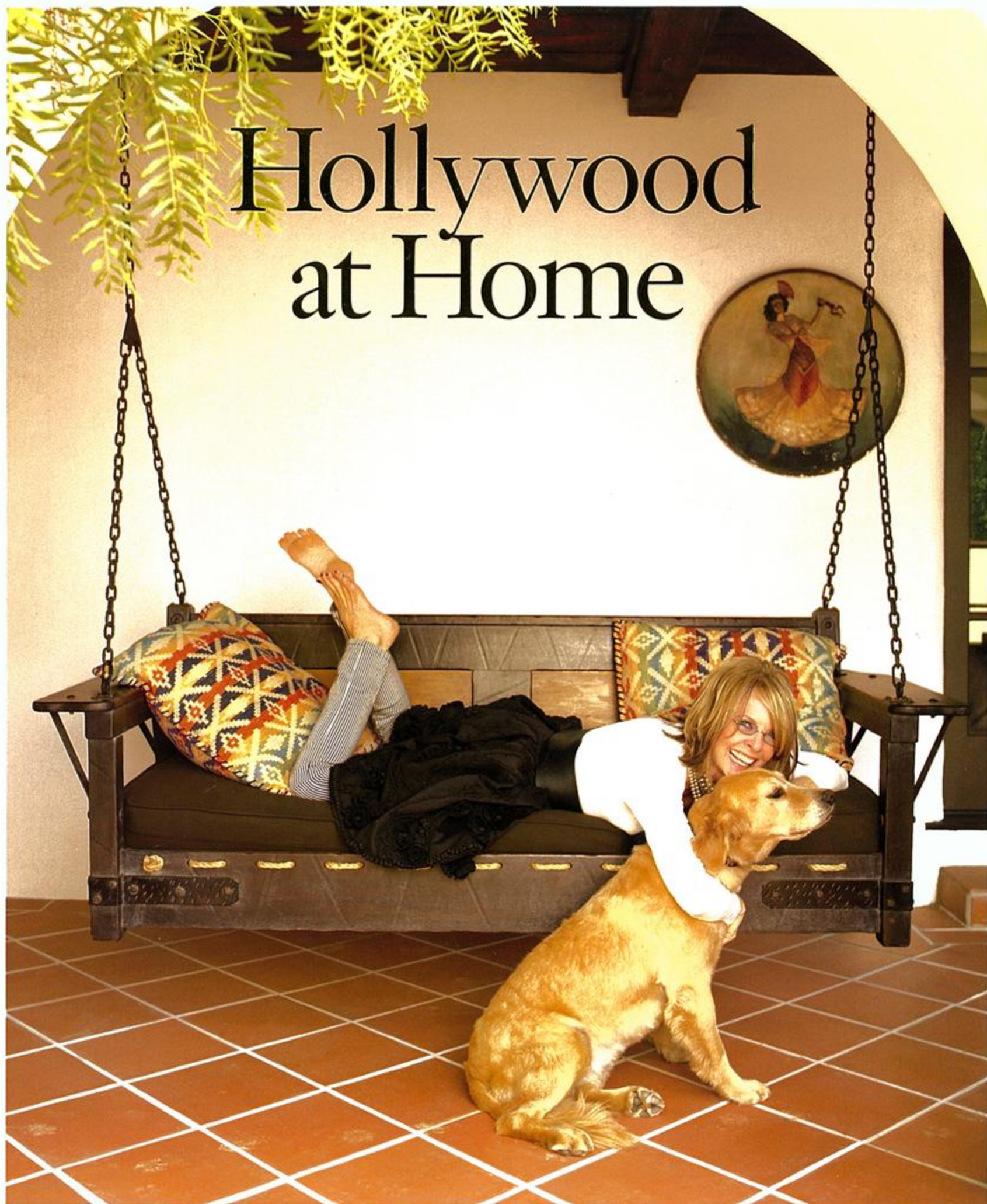


Hollywood at Home



...all in one destination.

Already a favorite setting for devotees of high country living, Aspen/Snowmass is undergoing an unprecedented transformation that brings together today's finest designers, America's premier real estate developer, and Aspen/Snowmass' legendary mountains. The result: Snowmass Base Village, a re-imagined mountain enclave presenting elite residential real estate opportunities.

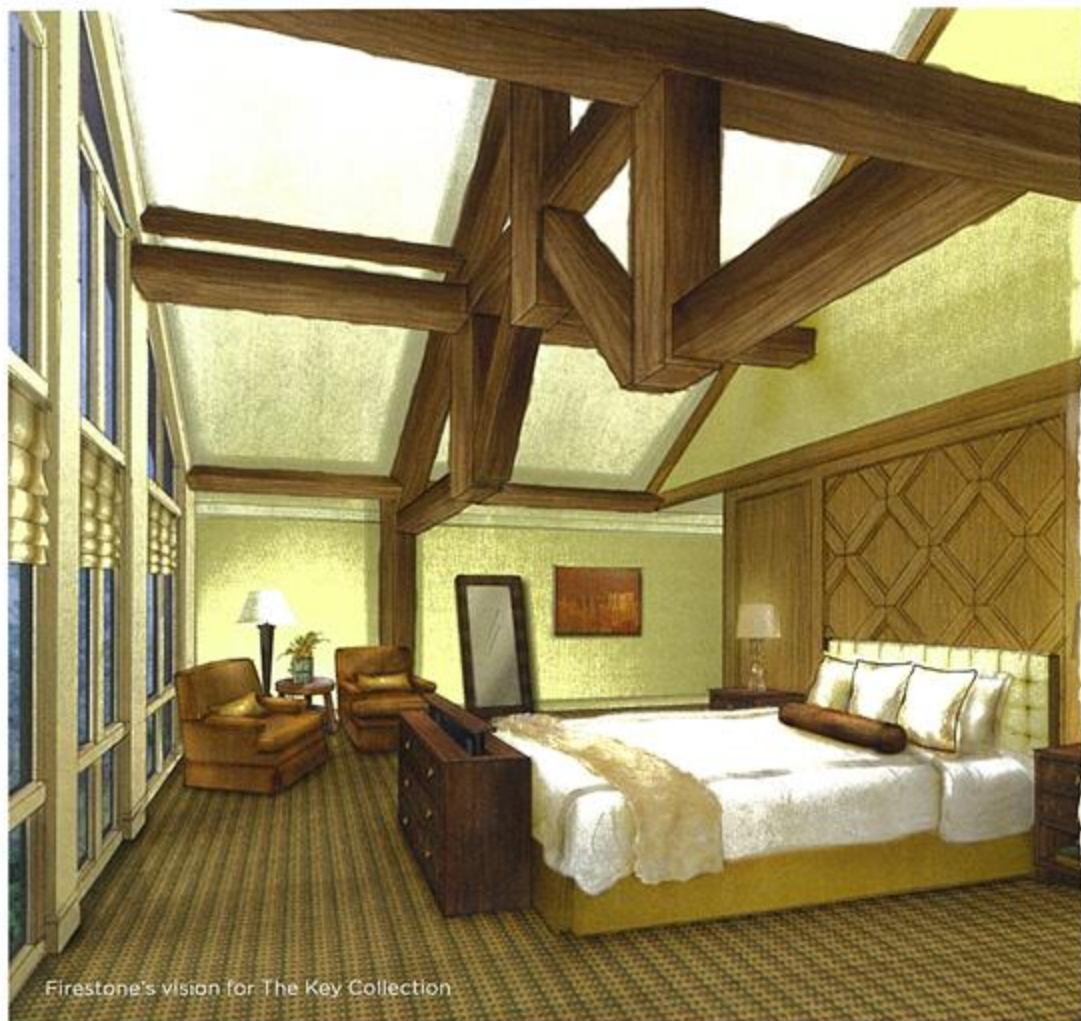
Developed by Related, the distinguished real estate firm behind such landmarks as Time Warner Center, these luxury properties in the new Base Village embody the balance of style, sport, nature and relaxation that defines Aspen/Snowmass. No other slopeside purchase provides access to the area's 5,300 acres of ski-able terrain at four world-class mountains—Snowmass, Aspen, Aspen Highlands and Buttermilk—with just one lift ticket. And no other offering showcases a veritable "who's who" of diverse design talent in a single location.

Coming home to Snowmass has never been more indulgent, with fully furnished environments that truly offer the comfort and luxury of a primary residence without the labor and legwork. Here, an exclusive design preview, with a full "reveal" to come in Winter 2009.


SNOWMASS
 BASE VILLAGE
 COLORADO



The Little Nell Snowmass



Firestone's vision for The Key Collection

THE KEY COLLECTION INTERIORS BY SUE FIRESTONE



"Customization defies trends," reveals designer Sue Firestone about her approach to design, adding that an understanding of what would make someone's home their own—how they would live in it and why they would love it—informed The Key Collection's interiors. In the heart of the new Base Village, The Key Collection offers 21 private residences with the pleasures and individuality of primary homes. Each of the Collection's buildings—Carriage House, Croft House and Latigo Lofts—were created by Colorado's top architectural firms, reinterpreting the indigenous Aspen/Snowmass aesthetic in distinct fashion. Interiors take a similar path, with layouts that highlight spectacular views, soothing, subtle color palettes, and custom furnishings that vary from home to home and room to room. Many materials are inspired by and found within the local landscape, including warm woods, earthy stonework and mixed metals.



SUE FIRESTONE has created environments for some of the world's most renowned spas and resorts, including the forthcoming redesign of the Four Seasons Beverly Hills, The Venetian Las Vegas and Big Sur's Ventana Inn and Spa. Whether the result is traditional, modern or a harmonious transitional blend, Firestone delivers graceful proportions, responding to the setting and letting the look develop organically.